

# RC2-100B Screw Compressor

## Specifications



Compressor

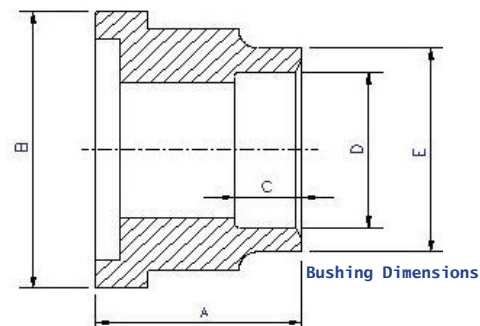
<b>Motor</b>	Displacement	CFM	60 Hz	69
	Rated Speed	Rpm	60 Hz	3550
	Nominal HP			38hp at 60Hz—208 Voltage
<b>Lubrication</b>	Volume Ratio	Vi		2.6 (standard other Vi available)
	Capacity Control	%		33%, 66% & 100% Step Capacity Control, 33%~100% Continuous Stepless Capacity Controls
	Type			3 Phase, 2 Pole, Squirrel Cage, Induction Motor
<b>Motor</b>	Insulation			Class F
	Protection			3 PTC Protection 1 per winding
	Lubricant Charge	Gallons		1.9
<b>Oil Heater</b>	Watts			150
<b>Hydrostatic Pressure test</b>	lb/in <sup>2</sup> G			597
<b>Weight</b>	Pounds			617 Comp. (skid 50x26x31 - Crated weight 816)

## Standard Compressors Accessories

- Modulating Slide Capacity
- Weather Proof Terminal Box for outdoor applications
- 115/1/60 Control Voltage
- 115/1/60 Crankcase heater
- Horizontal Discharge Check Valve
- Discharge Service Valve (Discharge Stop Valve) with standard connection sizes and supplied with flanges and bushings
- Suction Service Valve (Suction Stop Valves) with standard connection sizes and supplied with flanges and bushings
- Oil Level Float Switch
- Suction Filter
- Oil Filter
- PSI Relief Valve
- Oil Sight Glass
- PT1000 for Reading Motor Temp
- INT69HBY supporting motor and discharge (PTC) temperature sensor protection as well as Phase Loss and Phase Reversal at Start Up Only

## Ports

- External Oil Cooler
- Liquid Injection (into screw chamber)
- Economizer
- Suction, Discharge & Oil Service



## Connections

		Part #	Bushing Dimensions				
<b>Discharge Stop Valve</b>	1 1/2"	3101-1005AD					
<b>Horizontal Discharge</b>	1 1/2"	3101-1005AD					
<b>Suction Stop Valve</b>	2"	3131-1004AA					
<b>Economizer</b>	5/8" solder	N/A					
<b>Liquid Injection (chamber)</b>	3/8" flare	N/A					
<b>Discharge Bushing</b>	Copper Pipe Sizing 1 5/8"	3101-101AB	2.05"	2.95"	1.38"	1.64"	2.05"
<b>Suction Bushing</b>	Copper Pipe Sizing 2 1/8"	3131-101FA	1.99"	3.54"	1.18"	2.14"	2.56"

R22, R407C, R404A, R507A, R134a

## MCC & LRA

Hertz	Volts	Maximum Continuous Current	Y-Δ		Part Wind Start	
			Locked Rotor Amps (Y)	Locked Rotor Amps (D)	Locked Rotor Amps (D)	Locked Rotor Amps (DD)
60	220	142	153	460	211	440
60	460	68	80	240	113	235